



THA-31SUS

ステンレスパネル取手

Pulls

**特長**

各種機器に合わせてサイズが選べます。

用途

計測機器・通信機器等

Characteristic

Appropriate size can be selected for various devices.

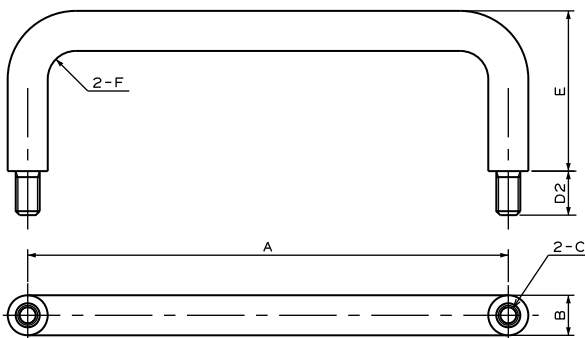
Application

Measuring instruments / Telecommunication devices, etc.

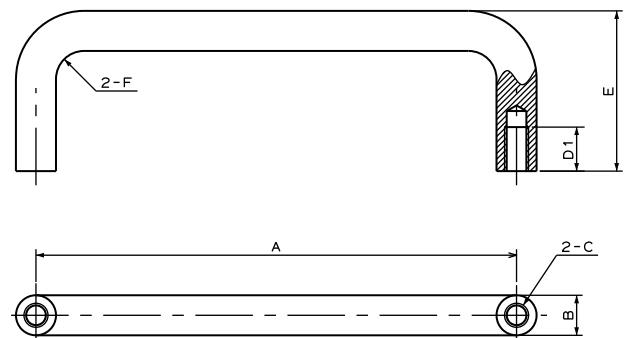
材質と処理 Material & Finish

| 部品名 Part Name | 材質 Material | 処理 Finish |
|------------------|----------------|------------------------|
| THA-31SUS-1~4 | SUS303 | バレル研磨 Barrel Polishing |
| THA-31SUS-5~8 | | バフ研磨 Barrel |

ネジ足 Screwed Feet



タップ足 Tapped Feet

**寸法・仕様表 Size List & Specification THA-31SUS ネジ足 Screwed Feet**

| 型番 Model No. | A | B | C | D2 | E | F | 垂直許容荷重 N (kgf) Allowable Vertical Load N (kgf) | 自重 (g) Net Weight (g) |
|------------------|-----|------------|------|----|----|-------|---|--------------------------|
| THA-31SUS-1- ネジ足 | 20 | φ4 | M2.6 | 7 | 22 | (R2) | 200 (20.4) | 6 |
| THA-31SUS-2- ネジ足 | 40 | φ6 | M4 | | | | 410 (41.8) | 17 |
| THA-31SUS-3- ネジ足 | 60 | | | φ8 | M5 | 10 | 30 | (R6) |
| THA-31SUS-4- ネジ足 | 80 | 340 (34.7) | 30 | | | | | |
| THA-31SUS-5- ネジ足 | 100 | φ10 | M6 | 11 | 35 | (R8) | 950 (96.8) | 62 |
| THA-31SUS-6- ネジ足 | 120 | | | | | | 40 | 900 (91.7) |
| THA-31SUS-7- ネジ足 | 100 | φ10 | M6 | 11 | 30 | (R11) | 1500 (152.9) | 88.5 |
| THA-31SUS-8- ネジ足 | 120 | | | | | | 40 | 1200 (122.3) |

寸法・仕様表 Size List & Specification THA-31SUS タップ足 Tapped Feet

| 型番 Model No. | A | B | C | D1 | E | F | 垂直許容荷重 N (kgf) Allowable Vertical Load N (kgf) | 自重 (g) Net Weight (g) |
|-------------------|-----|------------|------|----|----|-------|---|--------------------------|
| THA-31SUS-1- タップ足 | 20 | φ4 | M2.6 | 5 | 22 | (R2) | 200 (20.4) | 4.5 |
| THA-31SUS-2- タップ足 | 40 | φ6 | M4 | 7 | | | 30 | (R6) |
| THA-31SUS-3- タップ足 | 60 | | | | φ8 | M5 | | |
| THA-31SUS-4- タップ足 | 80 | 340 (34.7) | 26 | | | | | |
| THA-31SUS-5- タップ足 | 100 | φ10 | M6 | 11 | 30 | (R11) | 950 (96.8) | 55.5 |
| THA-31SUS-6- タップ足 | 120 | | | | | | 40 | 900 (91.7) |
| THA-31SUS-7- タップ足 | 100 | φ10 | M6 | 11 | 30 | (R11) | 1500 (152.9) | 82 |
| THA-31SUS-8- タップ足 | 120 | | | | | | 40 | 1200 (122.3) |

特注品のご相談承ります Please contact us for custom-made.