



THA-404

止め金具

Cam



特長

二重四角形（星形）の取付穴ですので、45度ずつの取付角度調節ができます。

用途

配電盤・分電盤・制御盤等

Characteristic

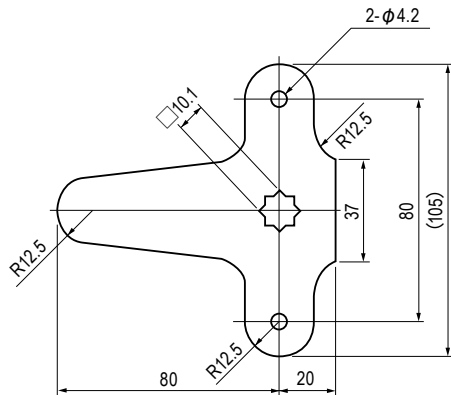
With its double squared installation hole, installation angle can be adjusted with each turn of 45°

Application

Distribution boards / Distribution panels / Control boards, etc.

材質と処理 Material & Finish

材質 Material	処理 Finish
SPCC	3価クロメート Trivalent Chromate Treatment



仕様 Specification

型番 Model No.	板厚 Plate Thickness	自重 (g) Net Weight (g)
THA-404	t3.2	114.1